



SDCERS Plan Benefits Overview



SCAN Health Plan Overview

- ▶ Founded over 40 years ago in the City of Long Beach
- ▶ Not-for-profit organization
- ▶ Medicare Advantage Prescription Drug Plan
- ▶ Our mission is keeping retirees healthy and independent

SCAN's 2019 STAR RATING



* 2019 star rating applies to all plans offered by SCAN Health Plan except SCAN Healthy at Home (HMO SNP) and VillageHealth (HMO-POS SNP) plans. Every year, Medicare evaluates plans based on a 5-star rating system.

Medicare Advantage Plan API

- ▶ SCAN Health Plan is an HMO
- ▶ Contract with private doctors, medical groups and hospitals
 - Scripps
- ▶ Part D is included at no additional cost
- ▶ Hospitalization is covered worldwide in case of an emergency.

Service Area by Counties

- ▶ Los Angeles
- ▶ Orange
- ▶ Riverside
- ▶ San Bernardino
- ▶ San Diego
- ▶ Ventura
- ▶ Santa Clara
- ▶ San Francisco
- ▶ Napa
- ▶ Sonoma

SCAN MAPD Benefit Highlights

- ▶ \$10 copay for Primary Care Physician/Specialist
- ▶ \$0 copay for Hospital Admission
- ▶ \$10 copay for Urgent Care
- ▶ Generous Prescription Drug Plan
- ▶ \$10 copay Generic
- ▶ \$20 copay Brand
- ▶ \$2,000 Hearing Aid Allowance
- ▶ \$10 copay for Routine Chiropractic Care, 20 self-referred visits
- ▶ \$0 copay for Transportation – unlimited rides; 75 miles max per ride
- ▶ \$0 copay SilverSneakers® – health club membership

What's New for 2019?

Telehealth MDLive

- ▶ \$40 per visit/call to speak to a board-certified doctor. Members will be able to access this service either through a computer/tablet, mobile app, or through the telephone.

Viagra

- ▶ Generic Viagra will be available for members under the Tier 2 \$5.00 copay limit of 4 pills per month.

Preferred Pharmacy Network Change

- ▶ Swapping from Walgreens to CVS

MDLIVE

Visit with a Doctor Anytime, Anywhere with MDLIVE



When it's not an emergency, you don't have an appointment to see your primary care physician (PCP) or when you just want a convenient alternative to an urgent care center, your telehealth benefit offers care 24 hours a day, 7 days a week, 365 days a year.

Telehealth is like a virtual house call. This benefit allows you to talk to a Board Certified medical doctor in the comfort of your own home for non-life threatening conditions. The visit can be conducted either by telephone or secure video capabilities from your computer or smart phone. The doctor can diagnose your non-emergency symptoms and send medically necessary prescriptions to your pharmacy.

- Safe and private; your information will only be shared with your PCP and pharmacy
- Available anywhere in the United States
- Talk to a doctor from the comfort of your own home or when you're on the go, or on vacation

Your COPAY is just

\$40 Per Visit

Non-emergency conditions we treat:

- Allergies
- Constipation
- Cough
- Diarrhea
- Ear problems
- Fever
- Flu
- Headache
- Insect bites
- Nausea
- Pink eye
- Rash
- Respiratory problems
- Sore throats
- Urinary problems/UTI
- Vomiting
- And more

Telehealth isn't a substitute for your primary care doctor. For all ongoing health needs, please continue seeing your primary care doctor. Your virtual doctor can see you now.

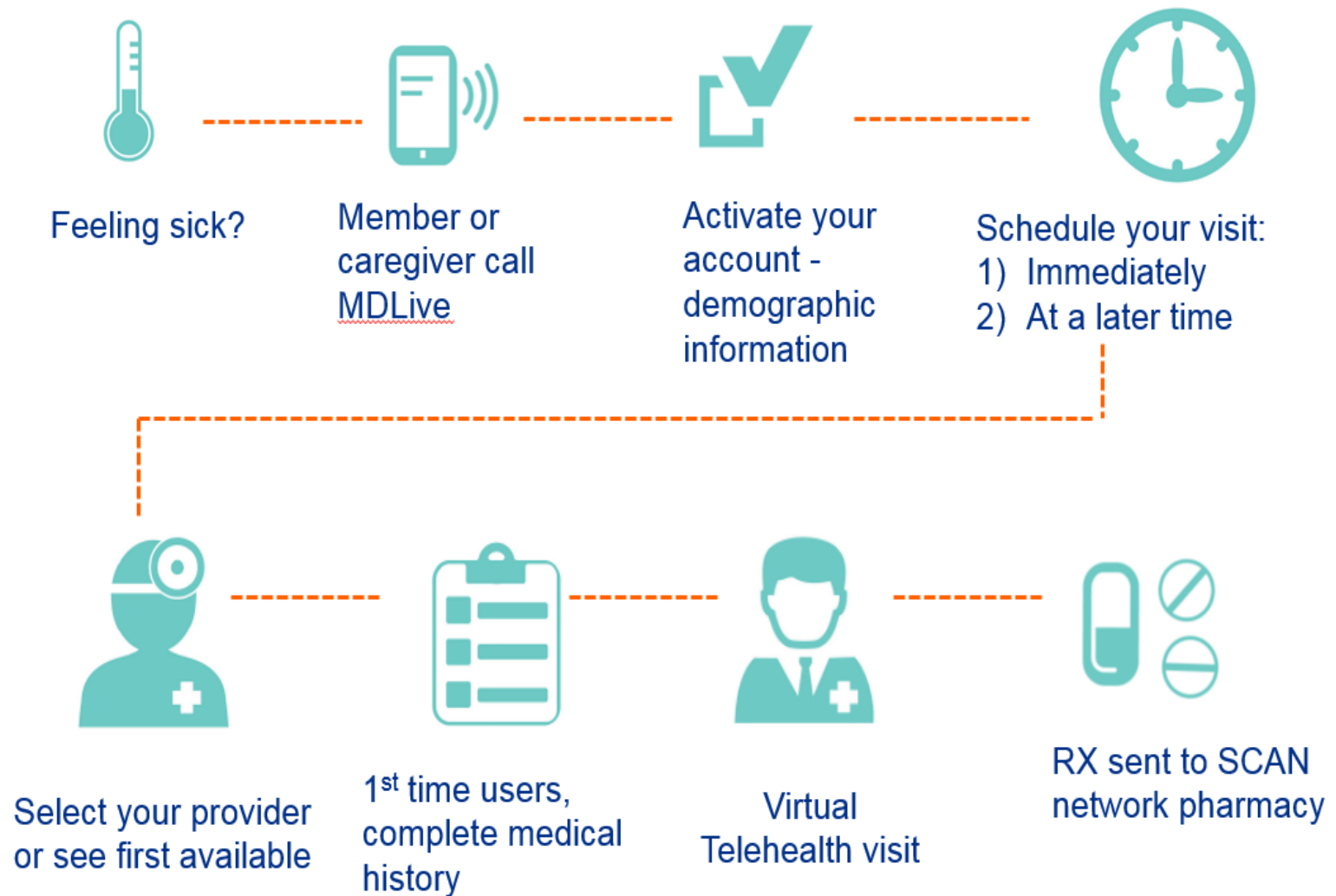
mdlive.com/scanhealthplan

Request a virtual consult today by calling
1-888-993-4087 (TTY: 800-770-5531)
24 hours a day, 7 days week.

Copyright © 2018 MDLIVE Inc. All Rights Reserved. MDLIVE may not be available in certain states and is subject to state regulations. MDLIVE does not replace the primary care physician, is not an insurance product and may not be able to substitute for traditional in person care in every case or for every condition. MDLIVE does not prescribe DEA controlled substances and may not prescribe non-therapeutic drugs and certain other drugs which may be harmful because of their potential for abuse. MDLIVE does not guarantee patients will receive a prescription. Healthcare professionals using the platform have the right to deny care if based on professional judgment a case is inappropriate for telehealth or for misuse of services. MDLIVE and the MDLIVE logo are registered trademarks of MDLIVE, Inc. and may not be used without written permission. For complete terms of use visit <https://www.MDLIVE.com/terms-of-use/>. MCR-1465

II - 6

Telehealth: How it works



SCAN Pharmacy Network Savings

- ▶ SCAN members have an option to save money on medications by filling prescriptions at a SCAN Preferred Pharmacy Network.
- ▶ The SCAN Preferred Pharmacy Network offers SCAN members lower copayments for many generic drugs.
- ▶ Standard Pharmacy Network 30 day \$10 generic copay
- ▶ Standard Pharmacy Network 90 day \$20 generic copay
- ▶ Preferred Pharmacy Network 30 day \$5 generic copay
- ▶ Preferred Pharmacy Network 90 day \$10 generic copay
- ▶ 90-day supply can also be filled at a retail pharmacy



Preferred



Standard

SWAP

• **CVS**

- Express Scripts Mail Order
- Rite Aid
- Walmart
- Costco
- Ralphs
- Safeway/Albertsons
- Many local pharmacies

• **Walgreens**

- Medicine Shoppe
- Many local pharmacies

✓ **Additional Copay Savings**
T1 - T2: \$5 - less for each Rx

✓ **Affordable prescription copays**

Independent Living Power Services®

- ▶ \$600 Monthly Allowance
- ▶ Personal Care Coordination \$0
- ▶ Homemaking \$15 per visit
- ▶ Personal Care \$15 per visit
- ▶ Home-Delivered Meals \$0
- ▶ Adult Day Care \$15 per visit
- ▶ Emergency Response System \$15 per month
- ▶ Caregiver Relief \$15 per visit
- ▶ Inpatient Custodial Care \$0 up to 5 days
- ▶ Inpatient Respite \$0 up to 5 days
- ▶ Community Resources \$0

(Only available in Los Angeles, Orange, Riverside, San Bernardino and San Diego Counties.)

SilverSneakers® – Fitness Benefit



SilverSneakers® includes:

- 1. A fitness membership with access to locations nationwide (including women-only locations) where participants can use equipment, take group exercise classes**
- 2. SilverSneakers FLEX™** for options outside the traditional fitness location, with classes including tai chi, yoga and walking groups offered by certified instructors at local parks and recreation centers (class locator and enrollment available on line)
- 3. SilverSneakers Steps®**, which includes a choice of four kits – general fitness, strength, walking and yoga – for use at home or when traveling

Getting started is simple...



Get more information:
SilverSneakers.com



Or call **1-888-423-4632.**



**Take your ID number or
card and visit a location.**



Connect with your online community:
Facebook.com/SilverSneakers

Who is Eligible to Enroll?

- ▶ SDCERS retirees:
 - Medicare Parts A and B entitlements
 - Reside within SCAN Health Plan Service Areas

SCAN Resources

- ▶ www.scanhealthplan.com/countyoforange
- ▶ SCAN Telesales
1-877-212-7654 from 8:00 a.m. to 8:00 p.m.
- ▶ SCAN Member Services
1-800-559-3500 from 8:00a.m. to 8:00 p.m.

Thank you

Thank you....

It's a pleasure to serve you!

For further information regarding SCAN benefits, please visit our exhibit booth after the conclusion of the remaining presentations.